

Turntable Diverter

Turntable Diverter modules provide bi-directional or tri-directional MPR conveyance of products. Bi-directional modules have one 30° or 45° spur mounted on either the right hand or left hand divert-position. Tri-directional modules have two 30° or 45° spurs mounted with one on each side. The mainline divert module is 60" long and consists of two 30" individually powered zones.

Technical Data:

Standard Widths: <ul style="list-style-type: none"> Nominal Widths (NW) offered are 19", 25", 32" and 37" Available Between Frames (BF) widths are 15", 21", 28" and 33" 	Configuration: <ul style="list-style-type: none"> Bi-directional – one spur mounted Tri-directional – two spurs mounted 	Rollers: <ul style="list-style-type: none"> 1.9" diameter, 16 gauge galvanized, single and double grooved, carrying rollers with 7/16" hex axles Roller spacing in 3" increments as a standard
Drive Rollers: <ul style="list-style-type: none"> 24 Volt DC brushless powered rollers w/ external motor drive cards mounted to bed frame 1.9" diameter, 7/16 hex axle 	Speed: <ul style="list-style-type: none"> Powered roller speed ranging from 55 to 237 feet per minute Capable of transferring up to 30 packages per minute 	Load: <ul style="list-style-type: none"> 100 lbs per linear foot maximum Contact NACI for larger load requirements
Frame/Length: <ul style="list-style-type: none"> 7¼" deep formed 12 gauge steel channel Standard bed length is 60" Powder coated NACI Blue as a standard 	Drive Transfer: <ul style="list-style-type: none"> Bed - 24VDC, 1.9" diameter power rollers Turntable – 24VDC brushless gear motor 	Supports: <ul style="list-style-type: none"> Optional floor or ceiling supports available

Features:

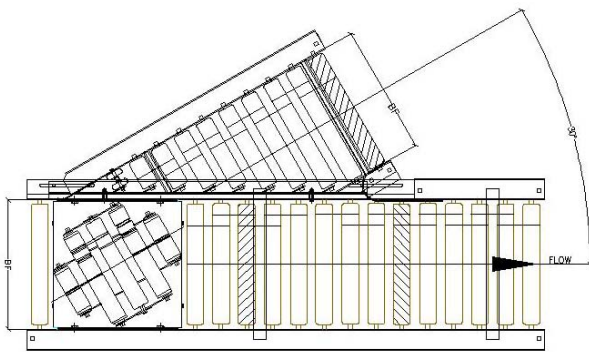
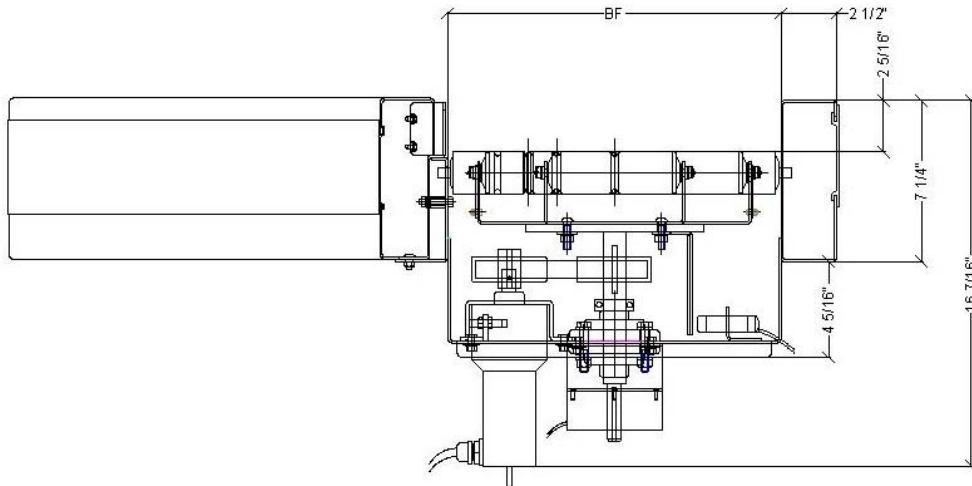
- Non-Contact Accumulation
- Quiet Operation
- Easy to Maintain
- Safe 24V DC Operation
- Low Energy Consumption
- Plug and Play Design
- Reduced Installation Time

Applications:

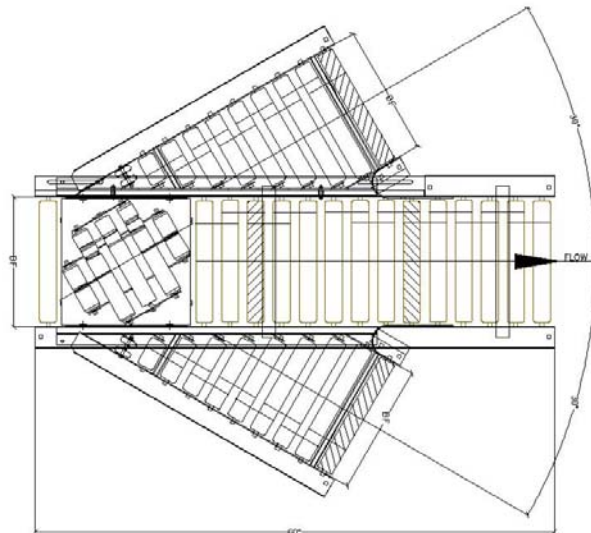
- Transportation
- Sortation

Options:

- Custom Widths
- Floor/ Ceiling Supports
- 30° or 45° Divert Angle
- Bi- or Tri-Directional



Bi-Directional



Tri-Directional

