

# Tight Radius Curve

Tight Radius Curve modules are designed to change the directional flow of product being conveyed while using a minimal amount of space. Tapered rollers are used to provide a speed differential between the inner and outer segments of the curve, which enables correct product oriented throughout the curve. Tight Radius Curve modules utilize 24 Volt DC motorized rollers and provide non-contact zero pressure accumulation conveyance. The conveyor modules are configured with individually powered zones that only run when product is detected by photo-eye sensors that are mounted in each zone. NACI offers a number of curves to meet a wide range of system requirements.

## Technical Data:

<p><b>Widths:</b></p> <ul style="list-style-type: none"> <li>Nominal Widths (NW) offered are 19", 25", 32" and 37"</li> <li>Available Between Frames (BF) widths are 15", 21", 28" and 33"</li> </ul>	<p><b>Curve Angles:</b></p> <ul style="list-style-type: none"> <li>Curve angles available are 30°, 45°, 60°, 90°, and 180°</li> </ul>	<p><b>Rollers:</b></p> <ul style="list-style-type: none"> <li>1.9" diameter, 16 gauge galvanized, 2 grooved, carrying rollers with 7/16" hex axles and tapered roller sleeves to maintain product orientation</li> <li>Roller spacing in 3" increments as a standard</li> </ul>
<p><b>Drive Rollers:</b></p> <ul style="list-style-type: none"> <li>24 Volt DC brushless powered roller w/ external motor drive cards</li> <li>1.9" diameter, 7/16 hex axle</li> </ul>	<p><b>Speed:</b></p> <ul style="list-style-type: none"> <li>Variable increments ranging from 55 to 237 feet per minute</li> </ul>	<p><b>Load:</b></p> <ul style="list-style-type: none"> <li>100 lbs per linear foot as a standard</li> <li>Contact NACI for larger load requirements</li> </ul>
<p><b>Frame:</b></p> <ul style="list-style-type: none"> <li>Roller Set Low (RSL) - 7¼" deep formed 12 gauge steel channel, 2" flange</li> <li>Roller Set High (RSH) - 5¼" deep formed 12 gauge steel channel, 2" flange</li> <li>Powder coated NACI Blue as a standard</li> </ul>	<p><b>Controls/ Photo-Eyes:</b></p> <ul style="list-style-type: none"> <li>Conveyors are provided complete with control cards, wiring/ cabling and photo-eye sensors</li> <li>All zones are wired with photo-eye sensors as a standard</li> </ul>	<p><b>Supports/ Side Rails:</b></p> <ul style="list-style-type: none"> <li>Optional floor or ceiling supports available on maximum 120" centers</li> <li>Optional 1¼" diameter side rails available for RSH frames</li> </ul>

### Features:

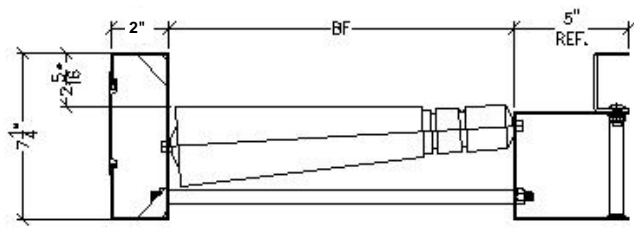
- Non-Contact Accumulation
- Quiet Operation
- Easy to Maintain
- Safe 24V DC Operation
- Low Energy Consumption
- Plug and Play Design
- Reduced Installation Time

### Applications:

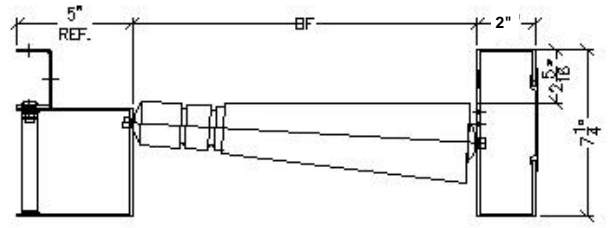
- Transportation
- Accumulation
- Assembly
- Staging

### Options:

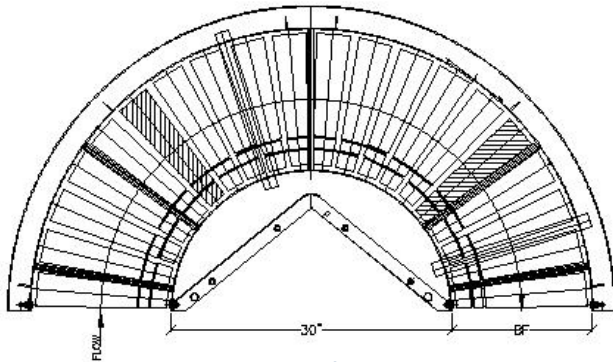
- Custom Widths
- Flexible Zone Lengths
- Side Rails, RSH only
- Floor/Ceiling Supports



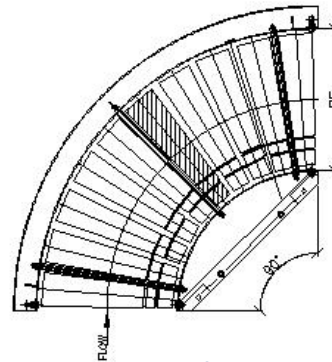
Right Hand Configuration



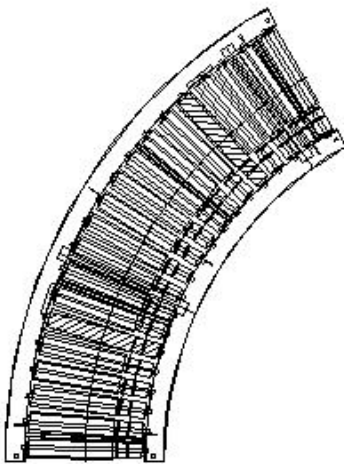
Left Hand Configuration



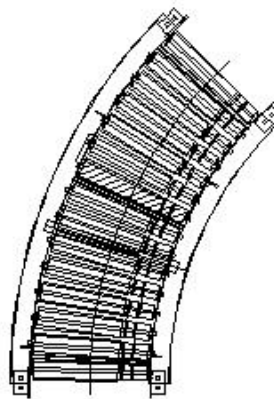
180°



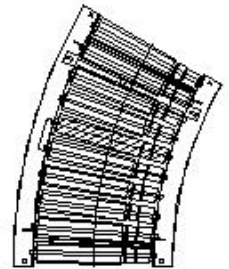
90°



60°



45°



30°

